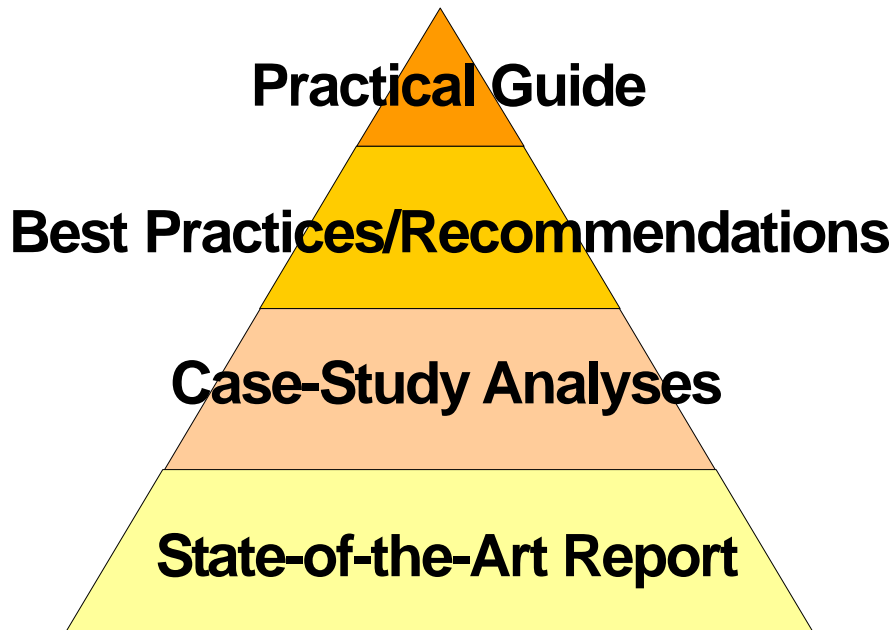




Valuing the shoreline

www.interreg-messina.org



MESSINA initiative

The intensification of population migration towards the coast and increased frequency of coastal hazards due to global climate change have led coastal managers at the local level to pay a particular attention to coastal dynamics and shoreline evolution. But in spite of major efforts invested and knowledge accumulated in the fields of shoreline management, lessons learned from European, national and regional initiatives have been so far poorly embedded in daily coastal management practices.

The MESSINA initiative intends to bridge this gap by increasing the knowledge and raise the managerial and technical capability of local authorities and institutions. An upgrading of existing shoreline management guidelines has been made through an integration of the latest techniques and methods available in Europe. The overall objective is to maximise the benefits of future investments in coastline management and raise the public awareness about the need to manage the coastline in a sound and sustainable way.

Project methodology – Component 3

The objective of the Messina component 3: *Valuing the Shoreline* is to review examples of economic analysis methodologies applied to shoreline management and to compile a guideline for socio-economic analysis for coastal management.

State-of-the-Art

Present knowledge on socio-economic methods and practices: technical, financial, organisational and social aspects

Case studies

- Lido of Sète, France
- Coastal extension in Southern Holland, Netherlands
- Ystad Sandskog, Sweden
- Coastal areas outside the dike, Netherlands

Best Practice and Recommendations

Experience and recommendations from the review of case studies

Practical Guide

Guideline for socio-economic valuation of the shoreline



Guideline for socio-economic valuation of the shoreline

This guideline gives an overview on how to make socio-economic evaluations of coastal areas affected by erosion and flooding. The use of such an evaluation gives valuable information and insight into the function, needs, effects and costs for handling - or not handling - the erosion problems.

Guide for coastal management

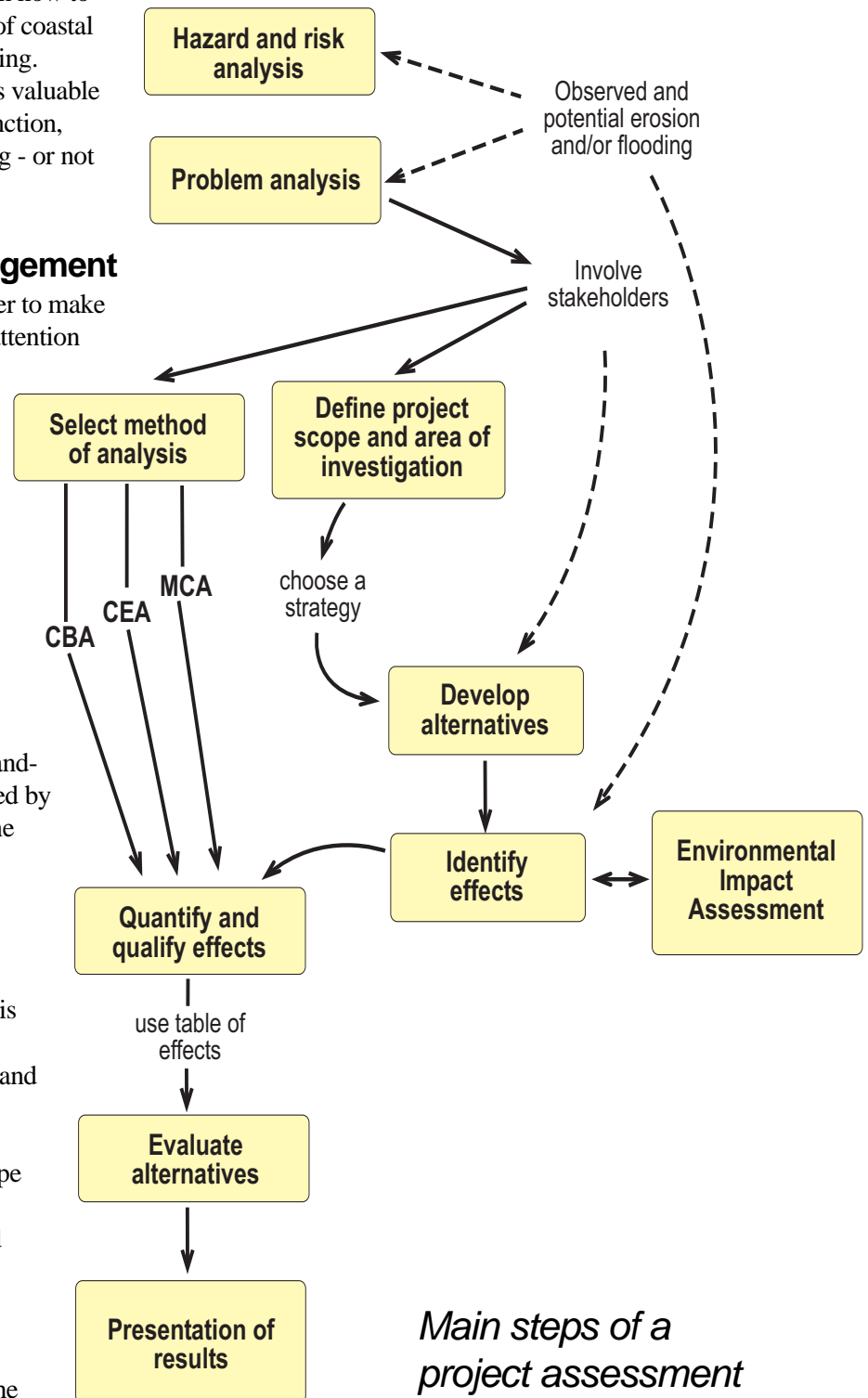
The guideline could be used in order to make priorities between areas that need attention due to threatened shorelines and/or which actions would be most efficient and effective to apply. Management of erosion and flood protection must be long term and take into account all possible factors and impacts of project.

This guideline is meant for people working at county administrations, municipalities, governmental authorities, private land-owners, etc., dealing with or affected by coastal erosion issues. The guideline can also be used when procuring consulting services in the field.

Project assessment

The process of an economic analysis for a coastal project starts with identifying risks of coastal erosion and flooding causing damage on values worth saving. Different alternative options are identified on how to cope with the hazards. The effects are identified, quantified, qualified and compared by a socio-economic evaluation method and the best alternative can be selected.

Stakeholders must be involved in the process, which gives transparency to the decision and all technical, societal and ecological factors can be taken into account.



Main steps of a project assessment

Partners of Component 3

You are welcome to contact the participants for further information

Swedish Geotechnical Institute (SGI) – Sweden (component leader)

Karin Rankka karin.rankka@swedgeo.se

Bengt Rydell bengt.rydell@swedgeo.se

www.swedgeo.se

National Institute for Coastal and Marine Management (RIKZ) - the Netherlands

Esther Uytewaal e.c.w.uytewaal@rikz.rws.minvenw.nl

www.rikz.nl

Autonomous University of Barcelona (UAB) - Spain

Jordi Serra jordi.serra@ub.edu

Elisabeth Roca elisabet.roca@uab.es

www.uab.es

Centre for Coastal Erosion Studies - Sweden

Mats Persson mats.persson@bekon.lth.se

www.erosionsskadecentrum.se

University of Szczecin - Poland

Kasimierz Furmanczyk kaz@sus.univ.szczecin.pl

Marek Dutkowski marek.dutkowski@univ.szczecin.pl

www.univ.szczecin.pl

Municipality of Ystad - Sweden

Erling Alm erling.alm@ystad.se

Ann-Sofi Eriksson ann-sofi.eriksson@ystad.se

www.ystad.se

More information and all reports
are available at the Messina web site:

www.interreg-messina.org

