

Practical Guide

Guideline for socio-economic valuation of the shoreline

Case-Study Analyses

Case-studies:

- Lido of Sète (France)
- Ystad Sandskog (Sweden)
- Coastal extension (Netherlands)
- Coastal cities (Netherlands)

Best Practices/ Recommendations

Experience and recommendations from the review of case-studies

State-of-the-Art Report

Present knowledge on socio-economic methods and practices: technical, financial, organisational, social aspects

Partners

Swedish Geotechnical Institute, Sweden
National Institute for Coastal and Marine Management, Netherlands
Autonomous University of Barcelona, Spain
University of Szczecin, Poland
Municipality of Ystad, Sweden
Centre for Coastal Erosion Studies. Sweden

www.interreg-messina.org

Component 3: Valuing the Shoreline

Guideline for socio-economic analysis

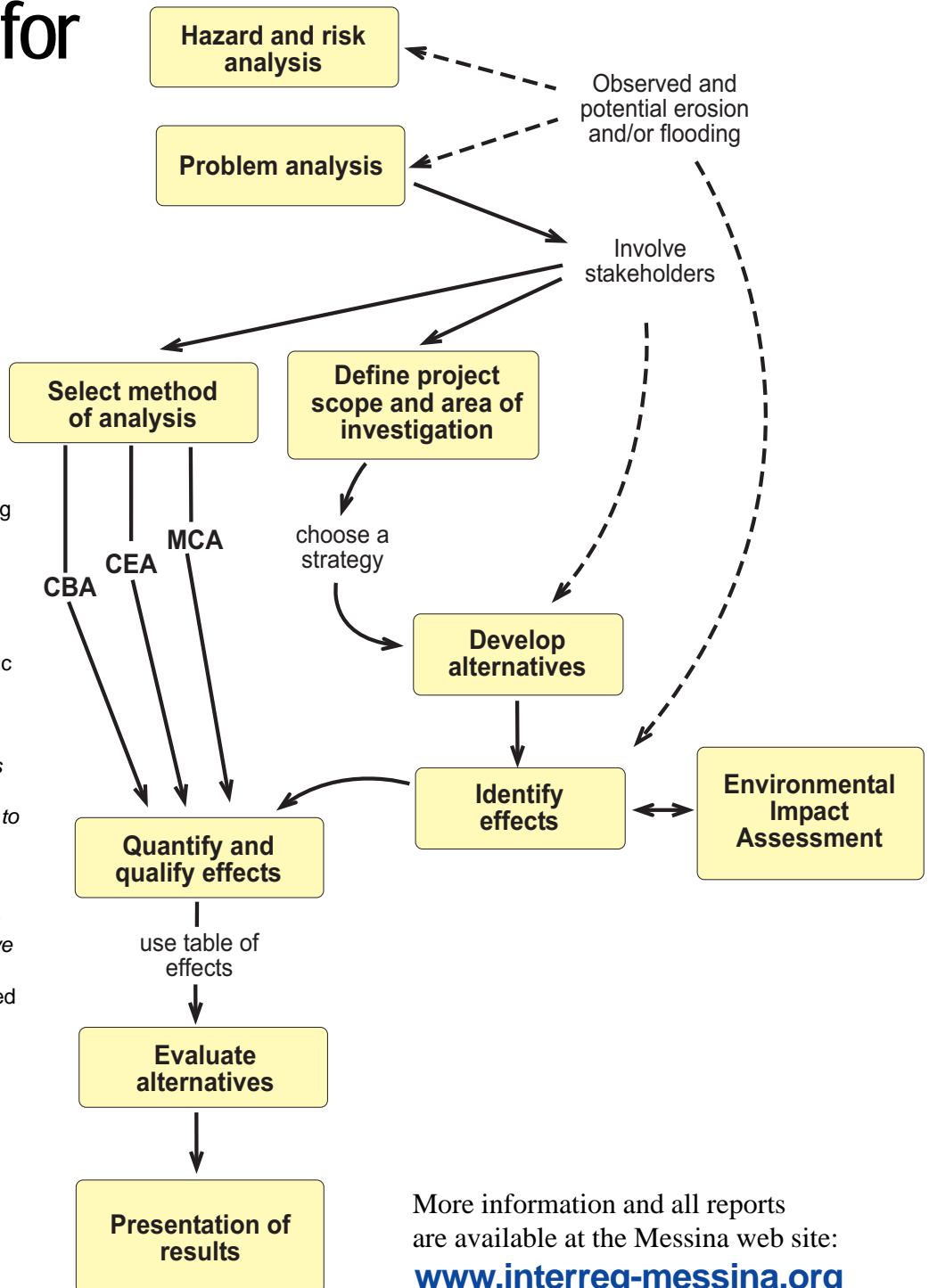
A guideline on how to make socio-economic evaluations of coastal areas affected by erosion and flooding.

A guideline for people working at county administrations, municipalities, governmental authorities, private land-owners, etc.

Process of an socio-economic analysis:

- identifying risks of coastal erosion and flooding causing damage on values worth saving
- alternative options on how to cope with the hazards
- effects are identified, quantified and qualified
- socio-economic evaluation to select the best alternative

Stakeholders must be involved to get transparency into the decision-making process.



More information and all reports are available at the Messina web site:
www.interreg-messina.org